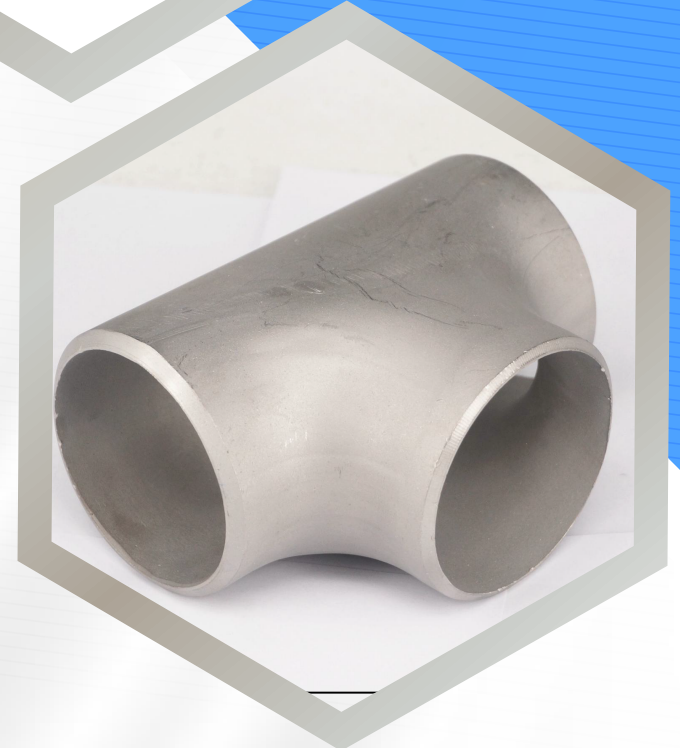


# STAINLESS STEEL REDUCING UNION TEE



Reducing Union Tees connect three tubes of different diameters, allowing flow branching with a reduction in size. Manufactured in SS 304 and 316, sizes from  $\frac{1}{8}$ " x  $\frac{1}{4}$ " to 1" x  $\frac{3}{4}$ " with pressure ratings up to 6000 PSI. Meets ASTM A182 and ISO 8434-1 standards. Used in instrumentation manifolds and control systems where seamless flow redirection and size adaptation are needed.